



LSM Curriculum

How to fulfill the ECTS requirements:

In total, each student has to earn 180 ECTS points within the doctoral studies. Your doctoral project (including the **disputation** and the **three TAC meetings**) sums up to **150 ECTS** and the remaining **30 ECTS** have to be earned as follows:

| Course | ECTS points | Details |
|---|----------------------------------|--|
| Orientation course | 2 | LSM application/Interview days |
| Lecture Series | 4 | <ul style="list-style-type: none"> Attend 15 internal lectures (LSM lecture series) & present one lecture within the LSM seminar series (1,5 ECTS) Attend 15 external lectures (1,5 ECTS) Attend 10 inter-/external lectures (1 ECTS) |
| Transferable Skills | 3 (1+1+1) | Course 1 (1 ECTS) Course 2 (1 ECTS) Course 3 (1 ECTS) |
| Method Courses | 6 (3+3) | Course 1 (3 ECTS) Course 2 (3 ECTS) |
| Retreats (two SFB retreats are equivalent to one LSM retreat) | 5 (1+2+2) | LSM Retreat organization (1 ECTS) LSM Retreat 1 (2 ECTS) LSM Retreat 2 (2 ECTS) |
| Conference (LSM may provide funding, see below) | 4 | International Conference (with poster or talk presentation) National Conference (optional) |
| Group Seminars | 4 | Lab meetings/progress report/ journal clubs throughout your doctoral studies |
| Advanced course | 2 | Teaching |
| TAC Meetings | Three TAC meetings are mandatory | Meeting 1 (6 months after beginning doctoral studies) Meeting 2 (1- year after the 1st TAC) around the 3rd semester Meeting 3 (1- year after the 2nd TAC) |
| Doctoral Project(s) | 150 | Including 3 TAC meetings and the disputation |

Generally: 1 ECTS = 30h of effort (incl. attendance, preparation, etc.)



LUDWIG-
MAXIMILIANS-
UNIVERSITÄT
MÜNCHEN

GRADUATE SCHOOL
LIFE SCIENCE MUNICH



Proof of participation is required for all training events. For workshops organized by the LSM there is always a signature list as is the case with our LSM lecture series (internal lectures). If you participate in a workshop from another programme, please don't forget to hand in a copy of the certificate!

LSM organized workshops get announced per Email and on the LSM homepage.

Additionally, you can also find course offerings on campus on the LSF course catalogue.

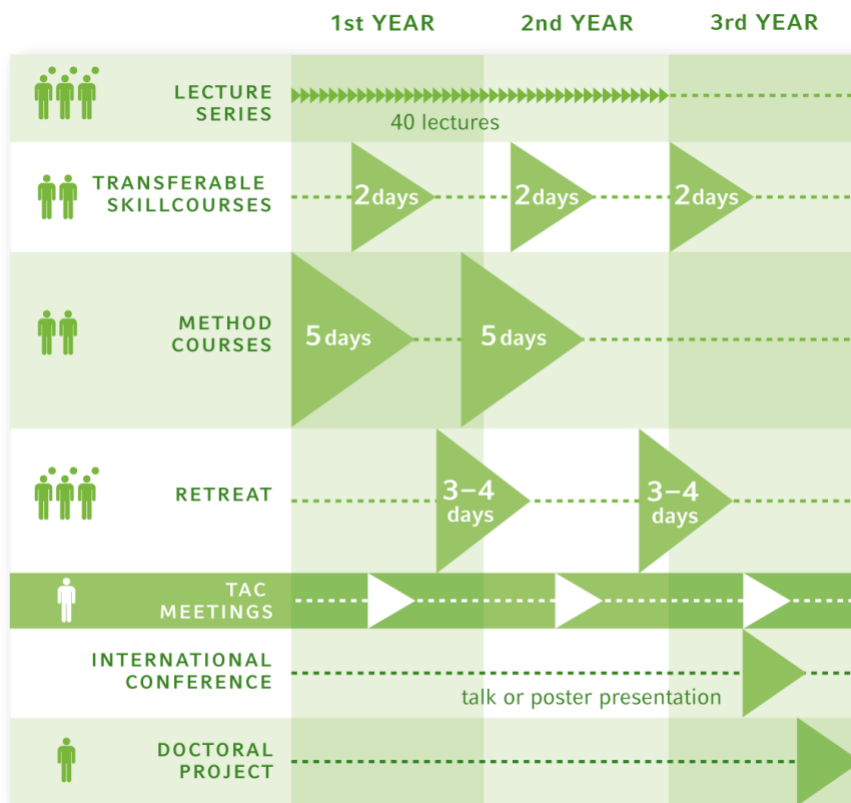
<https://lsf.verwaltung.uni-muenchen.de/qisserver/rds?state=wtree&search=1&category=veranstaltung.browse&navigationPosition=functions%2Clectureindex&breadcrumb=lectureindex&topitem=locallinks&subitem=lectureindex&noDBAction=y&init=y>

Workshops/training events offered by external institutions could also get acknowledged

More about the curriculum on the LSM homepage:

<https://www.lsm.bio.lmu.de/curriculum1/index.html>

Certificates of participation in lab seminars/external talks/teaching may be downloaded from the homepage: <https://www.lsm.bio.lmu.de/downloads/index.html>



Overview LSM Curriculum



LSM Travel Fund

LSM students can apply for funding of e. g. conference participation or learning methods in foreign labs, etc before the event takes place. For requesting travel funds, please email me the following and put your supervisor in CC.

- Statement, that you request funding for ... (e.g. congress, summer school,) including date and place of the event
- Detailed list of all expected costs
- Part of costs for which you request reimbursement by the LSM
- Matching Funds (part of the costs that will be covered by your lab or other sources)

Should you have any questions, contact LSM:

Graduate School Life Science Munich (LSM)
Nadine Hamze
Tel: +49 (0) 89 / 2180-74765
Fax: +49 (0) 89 / 2180-74752
Email: LSM@bio.lmu.de